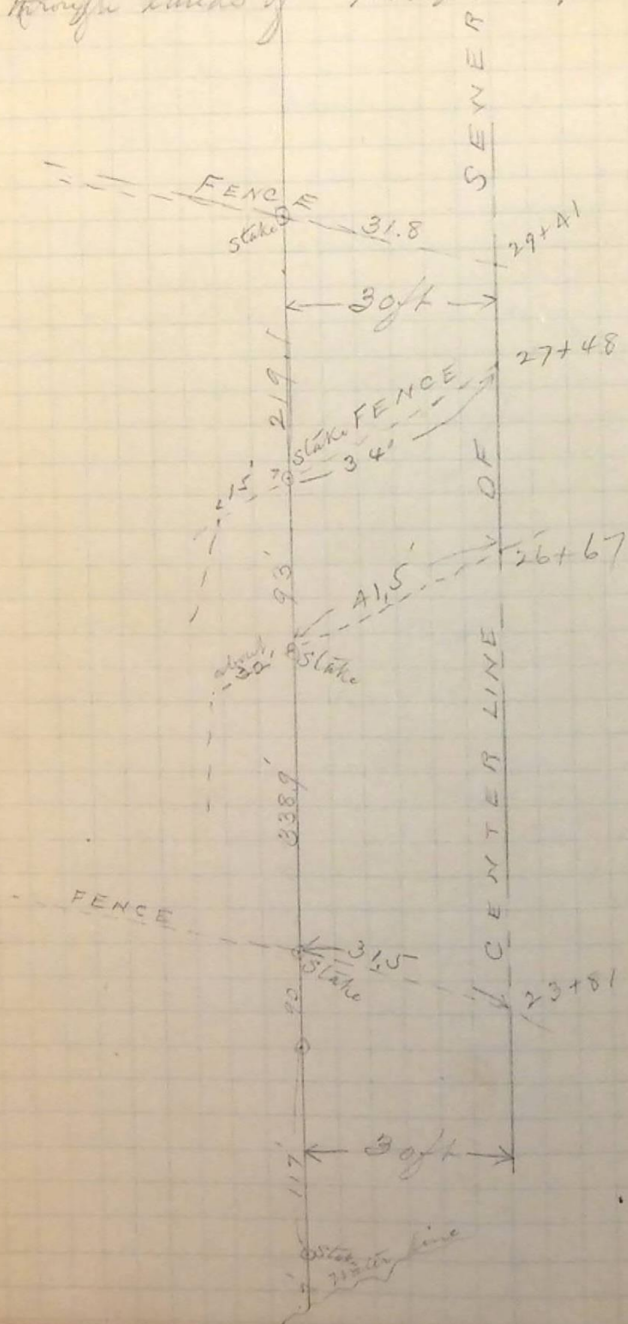


August 4 - 1890 (P. M.)

Survey of a line 30' North of Center Sewer line
and through lands of Woodman.



Set Stakes and hubs in Center and
Stakes on Curb lines on Adams Ave
from N. side 25th St. to S. side of 23rd
St.

P. M. Aug 7th 1890

A. M. Aug 12 - 90

Ran center line of Grant Ave
from 26th St to 30th for cross-section
Notes.

A. M. Aug 12 - 90

Ran Center line of 30th St from
Lincoln to Washington for x-section Notes.

P. M. Aug 12 - 90

